



## ***STONEWARE (SW) PIPES & FITTINGS***

**(IS 651:2007)**

*“SORKHI” Stoneware (SW) Pipes & fittings* are vitreous or semi-vitreous ceramic pipes made primarily from stoneware clay or non-refractory fire clay. Stoneware is fired at high temperatures. The interior and exterior surfaces of the pipes and fittings which remain exposed after jointing are glazed. SW Pipes are used as an underground piping system for Sewerage and storm water drainage.



**SIZE RANGE :- 100MM TO 600MM (SP 1)**





Available Sizes
100MM Glazed Stoneware (SW)
150MM Glazed Stoneware (SW)
200MM Glazed Stoneware (SW)
250MM Glazed Stoneware (SW)
300MM Glazed Stoneware (SW)
350MM Glazed Stoneware (SW)
400MM Glazed Stoneware (SW)
450MM Glazed Stoneware (SW)
500MM Glazed Stoneware (SW)
600MM Glazed Stoneware (SW)



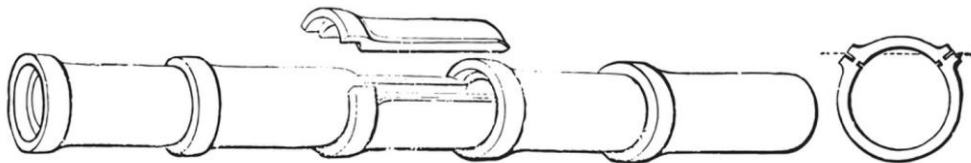
**GENERAL QUALITY (AS PER CLAUSE 5 OF IS 651:2007)**



All pipes and fittings shall be sound and free from visible defects which impair the strength, durability and serviceability. The glaze of pipes and fittings shall be free from crazing. The pipes and fitting shall give a sharp clear note when struck with a light hammer.



For pipes and fittings, a maximum of 10 percent shall be acceptable with any one of following blemishes which do not impair the strength, durability and serviceability provided these pipes and fittings satisfactory pass the hydraulic test specified in 7.2:



**SORKHI INDUSTRIES PRIVATE LIMITED**

Corp Office :- VPO Sorkhi Tehsil Hansi, Distt. Hisar, Haryana – 125033 / Contact No :- + 91 92156 62225  
 Delhi Office :- Contact No :- +91- 9215662290 & 91-9215662289/Email – teamsorkhi@gmail.com  
 Email :- marketing@sorkhiindustries.in / www.sorkhidwcpipe.com